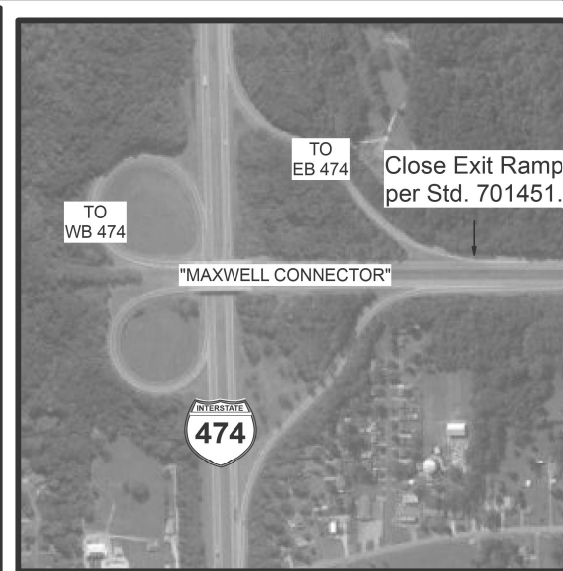
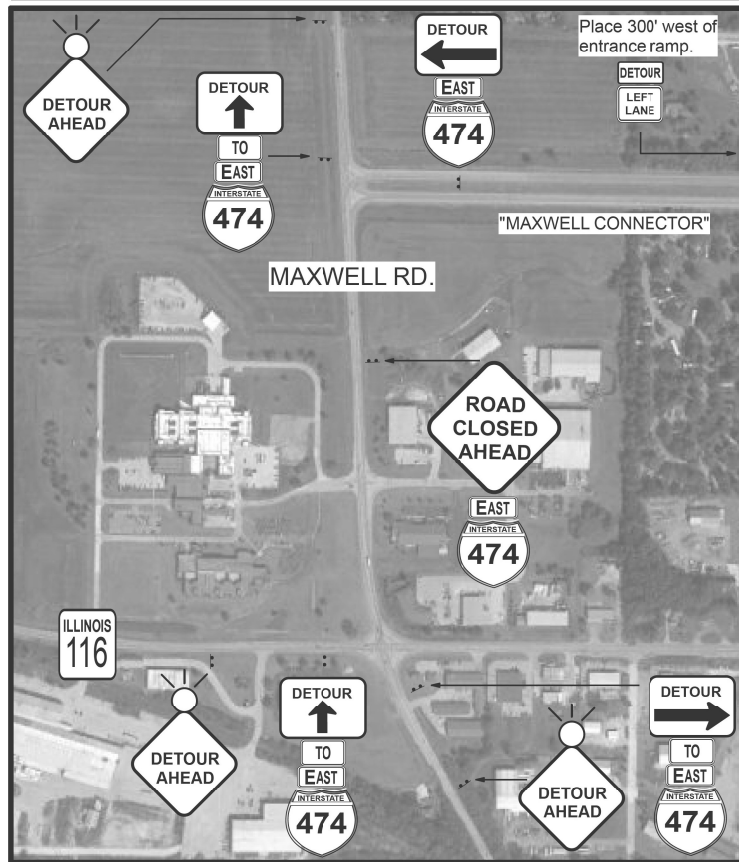
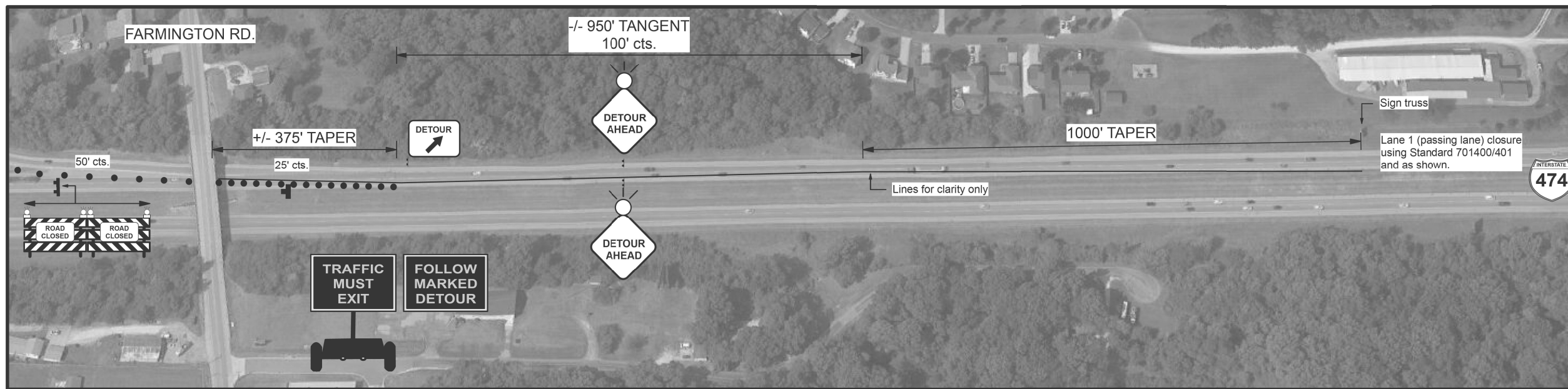
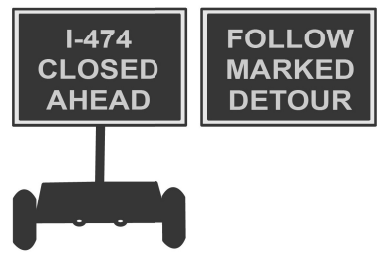


# EB I-474 CLOSURE FOR BEAM REMOVAL/SETTING



- DETOUR** (TYP.) BLACK ON ORANGE 30X24
- BLACK ON ORANGE 24X12
- TO** WHITE ON BLUE 24X12
- EAST** WHITE ON BLUE 24X12
- 474** EXISTING COLORS 24X24
- LEFT LANE** BLACK ON WHITE 24X18
- FLASHING MONO-DIRECTIONAL LIGHT
- DRUM/BARREL WITH STEADY-BURN MONO-DIRECTIONAL LIGHT

ALL SIGNS MAY BE STAND MOUNTED.



PLACE 1 MILE EAST OF THE ADVANCED 3 MILE MESSAGE BOARD.

MODEL: D:\p1\11111111\DOT\_DIST\PTB\_194-035\_v01\_01\_11\11111111\_10\_Airport\_Road\_Phase\_2\_3120032-10\CAD\_Sheets\1468886-eh-ctg\11111111\_10\_Airport\_Road\_Phase\_2\_3120032-10.dwg  
 FILE NAME: P:\C\11111111\DOT\_DIST\PTB\_194-035\_v01\_01\_11\11111111\_10\_Airport\_Road\_Phase\_2\_3120032-10.dwg  
 USER: upchurchgroup@upchurchgroup.com

**The Upchurch Group**  
 architects engineers surveyors  
 123 North 15th Street  
 Mattoon, IL 61938  
 Phone: 217.235.3177  
 License No. 154-003401

USER NAME = Sta42	DESIGNED - MJS	REVISED -
TUG PROJECT NO. 3120032-10	DRAWN -	REVISED -
PLOT SCALE = 100,0000 ' / in.	CHECKED - MJS	REVISED -
PLOT DATE = 6/19/2023	DATE -	REVISED -

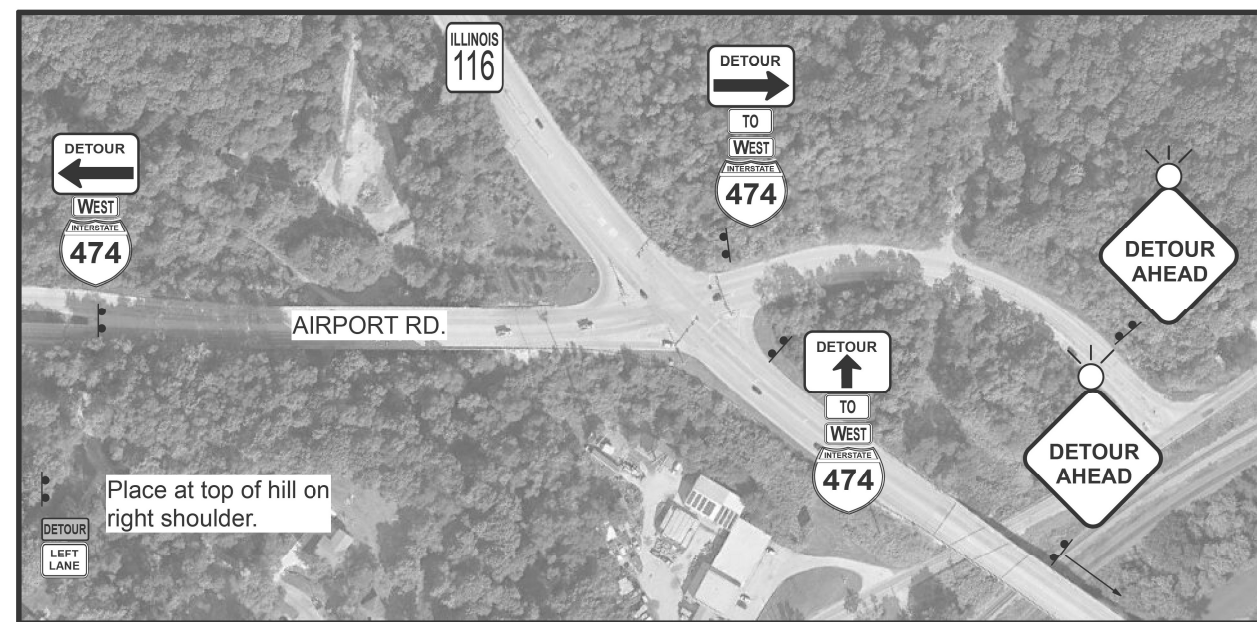
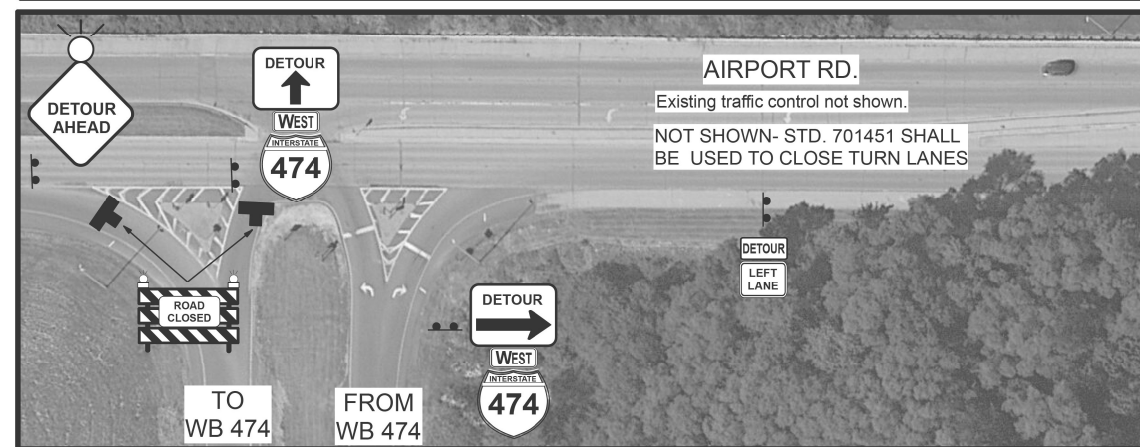
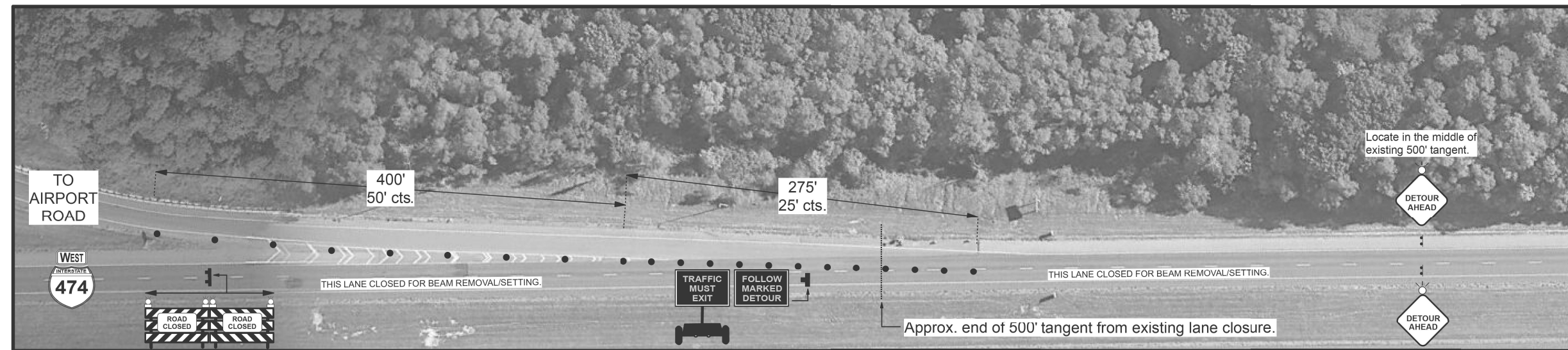
**STATE OF ILLINOIS**  
**DEPARTMENT OF TRANSPORTATION**

**TRAFFIC CONTROL PLAN - I-474 BEAM REPLACEMENT**  
**AIRPORT ROAD OVER I-474**

SCALE: 1 SHEET OF SHEETS STA. TO STA.

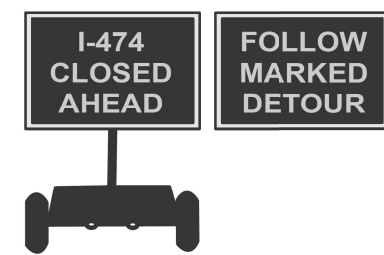
F.A.I. RTE.	SECTION	COUNTY	TOTAL SHEETS	SHEET NO.
474	(72-3HB-4)BR	PEORIA	175	61
CONTRACT NO. 68886				
ILLINOIS FED. AID PROJECT				

# WB I-474 CLOSURE FOR BEAM REMOVAL/SETTING



- DETOUR (TYP.) BLACK ON ORANGE 30X24
- DETOUR BLACK ON ORANGE 24X12
- TO WHITE ON BLUE 24X12
- WEST WHITE ON BLUE 24X12
- INTERSTATE 474 EXISTING COLORS 24X24
- LEFT LANE BLACK ON WHITE 24X18
- FLASHING MONO-DIRECTIONAL LIGHT
- DRUM/BARREL WITH STEADY-BURN MONO-DIRECTIONAL LIGHT

ALL SIGNS MAY BE STAND MOUNTED.



PLACE 1 MILE WEST OF THE ADVANCED 3 MILE MESSAGE BOARD.

MODEL: Default; FILE NAME: P:\CADD\DOT\_DIST\PTB 194-035 var PH I-I 3120032-10 Airport Road Phase 2 3120032-10 CAD Sheets\1468886-ah-ct-design 1474 WB closure.dgn

**The Upchurch Group**  
architects engineers surveyors  
123 North 15th Street  
Maitland, IL 61938  
Phone: 312.255.3177  
License No. 154-003401  
email: upchurchgroup@upchurchgroup.com

USER NAME = Sta42	DESIGNED - MJS	REVISED -
TUG PROJECT NO. 3120032-10	DRAWN -	REVISED -
PLOT SCALE = 100,0000' / in.	CHECKED - MJS	REVISED -
PLOT DATE = 6/19/2023	DATE -	REVISED -

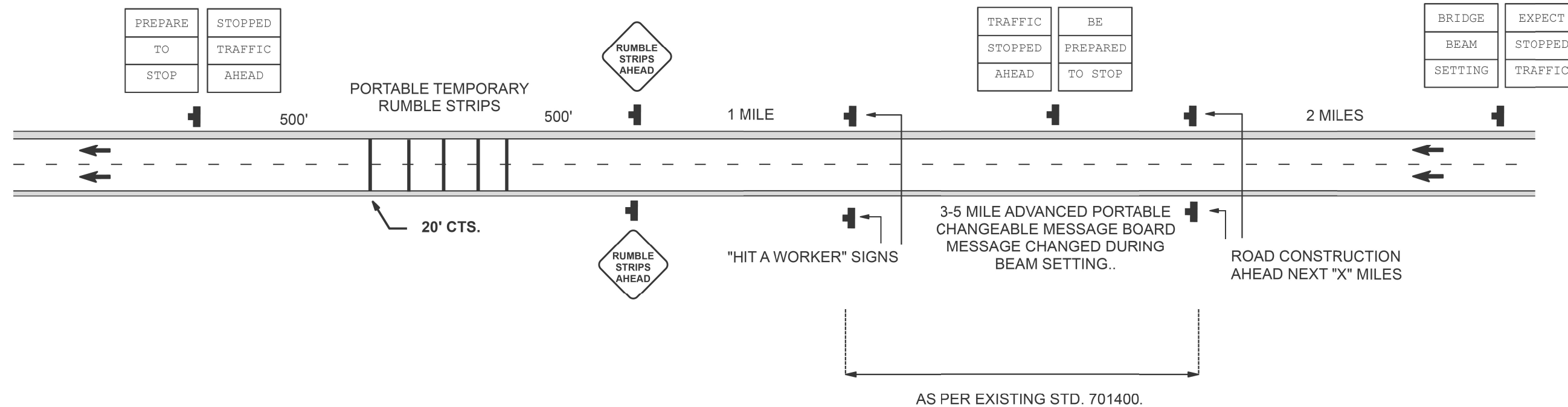
STATE OF ILLINOIS  
DEPARTMENT OF TRANSPORTATION

TRAFFIC CONTROL PLAN - I-474 BEAM REPLACEMENT  
AIRPORT ROAD OVER I-474

SCALE: 1 SHEET OF SHEETS STA. TO STA.

F.A.I. RTE.	SECTION	COUNTY	TOTAL SHEETS	SHEET NO.
474	(72-3HB-4)BR	PEORIA	175	62
CONTRACT NO. 68886				
ILLINOIS FED. AID PROJECT				

# INTERSTATE TRAFFIC STOPS



TEMPORARY RUMBLE STRIPS SHALL BE PLACED AFTER ALL SIGNAGE IS IN PLACE AND REMOVED PRIOR TO ALL SIGN REMOVAL.

CONTRACTOR SHALL NOTIFY IDOT TWO WEEKS PRIOR TO ARRANGE ISP TROOPER FOR DELAYS. THE TROOPER WILL STAY IN ADVANCE OF THE TRAFFIC QUEUE AND SHALL NOT BE POSITIONED NEAR THE FLAGGER.

FULL CLOSURE OF ONE DIRECTION SHALL BE LIMITED TO 20 MINUTES. ADDITIONAL CLOSURES SHALL RESUME WHEN DELAYED TRAFFIC HAS CLEARED.

CLOSURES SHALL BE DONE AT NIGHT FROM 10:00 PM TO 6:00 AM-MONDAY THRU THURSDAY. NIGHT WORK WILL REQUIRE LIGHTING PER IDOT SPECIFICATIONS

FOR NIGHTTIME WORK ZONE LIGHTING. NO ADDITIONAL COMPENSATION SHALL BE ALLOWED FOR NIGHTTIME WORK ZONE LIGHTING UNLESS SPECIFIED IN CONTRACT PLANS..

SATURDAY/SUNDAY- NO DAY OR NIGHT CLOSURES ALLOWED.

ALL COSTS ASSOCIATED WITH THIS DETAIL SHALL BE INCLUDED WITH TRAFFIC CONTROL AND PROTECTION STANDARD 701400.

MODEL: I:\draft\...  
 FILE NAME: P:\CADD\IDOT\_DIST\PTB\_194-035\_war\_P4\_I-I\_3120032-10\Airport\_Road\_Phase\_2\_3120032-10\CAD\_Sheets\3120032-10\Traffic Stops.dgn  
 PROJECT: IDOT\_DIST\PTB\_194-035\_war\_P4\_I-I\_3120032-10\Airport\_Road\_Phase\_2\_3120032-10

**The Upchurch Group**  
 architects engineers surveyors  
 Professional Design Firm Corporation  
 License No. 154-003401  
 123 North 156 Street  
 Matteson, IL 61438  
 Phone: 217.235.3177  
 Email: upchurchgroup@upchurchgroup.com

USER NAME = Sta42	DESIGNED - MJS	REVISED -
TUG PROJECT NO. 3120032-10	DRAWN -	REVISED -
PLOT SCALE = 100,0000 ' / in.	CHECKED - MJS	REVISED -
PLOT DATE = 6/19/2023	DATE -	REVISED -

**STATE OF ILLINOIS  
 DEPARTMENT OF TRANSPORTATION**

**TRAFFIC CONTROL PLAN - I-474 BEAM REPLACEMENT  
 AIRPORT ROAD OVER I-474**

SCALE: ' / in. SHEET OF SHEETS STA. TO STA.

F.A.I. RTE.	SECTION	COUNTY	TOTAL SHEETS	SHEET NO.
474	(72-3HB-4)BR	PEORIA	175	63
CONTRACT NO. 68886				
ILLINOIS			FED. AID PROJECT	